

# IMPASOL<sup>®</sup> SOLVENT S 95 GEL

**REMOVER OF OLDER PAINTS, VARNISHES, ADHESIVES AND COMPOSITE RESINS**  
**REPLACES PRODUCTS WITH METHYL CHLORIDE (DICHLOROMETHANE)**  
**WASHABLE WITH WATER**  
**GEL VERSION**

**IMPASOL<sup>®</sup> SOLVENT S95 GEL** is specifically developed for the extreme removal of all types of paints, varnishes and inks, and also resins. It is ideal for highly efficient and economical removal of a wide range of coatings, but also for two-component systems, thermosetting systems and even for systems with UV polymerization !!!

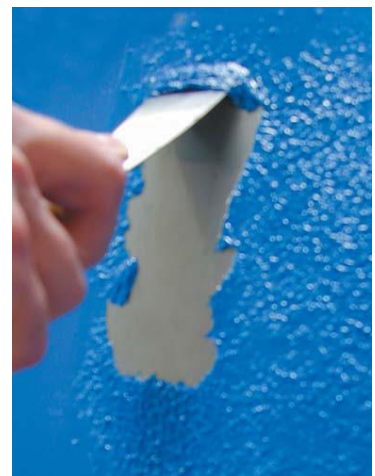
**Especially for the removal of glycerophosphoric acids, plastics based on cellulose derivatives, acrylic resins, vinyls, aminoplasts, acrylics, polyesters, phenols, one and two-component epoxy resins, one and two-component polyurethanes used in industry, where it significantly improves economic (low evaporation losses), working (very easy to apply) and safety conditions.**

This product makes it possible to reduce the amount used by up to 40% compared to conventional preparations. It has a much greater covering ability than most traditional varnish removers, thanks to its WETTABILITY, its optimal evaporation rate and its easy application without dangerous factors. Its use you will avoid toxic, carcinogenic and extremely flammable thinners.

**IMPASOL<sup>®</sup> SOLVENT S95 GEL** can be rinsed with water under low pressure, thus greatly reducing economic costs and evaporation rate.  
**Guaranteed without methylene chloride (dichloromethane).**

## APPLICATION

- *Removal and cleaning of systems and heads for equipment for the production of PU foams.*
- *Removal and cleaning of systems and endings from deposits of composite polyester resins, gels and paints.*
- *Cleaning of thermoplastic molds contaminated with resins.*
- *Cleaning of ink tanks in offset printing and flexography.*
- *Cleaning of brushes, rollers, tools, applicators and utensils contaminated with polyester resins.*
- *Dipping, spraying and cleaning of stainless steel paint rollers, gravure printing and roller feeders.*
- *Removing stickers and labels*
- *Cleaning surfaces contaminated with resins, adhesives, paints, varnishes and inks.*
- *Cleaning of presses and equipment for the application of bitumen and asphalt.*
- *Cleaning of screen prints and their components.*
- *Washing of tanks, mixing and dosing equipment for resins and monomers.*
- *Cleaning by spraying and brushing production tanks and mixers.*



## IMPASOL® SOLVENT S95 GEL is especially recommended for:

- *Washing of applicators, molds, nozzles and diffusers contaminated with varnishes, paints, foams, adhesives and resins.*
- *Washing of containers, accessories, applicators for the application of polymerized paints.*
- *Washing and cleaning things contaminated with resins.*
- *Removing paints and varnishes.*

## METHOD OF USE

👁️ Cloth   👁️ Immersion   👁️ Ultrasound   👁️ Tampon   👁️ Brush   👁️ Paint-brush

CHARACTERISTICS	NORM	VALUE	UNIT
Appearance	Visually	Transparent	
Color	Interne CQ 016	Amber	
Test - Copper plate corrosion 100 h at 40 ° C	ASTM D 130 NFM M 07015	1a	Record
Physical state	Visually	Gel liquid	
Water dilutability		0	ppm
KB index, solvent ability [rating]	ASTM D 1133	>300	
Refractive index of light, at 20 ° C	ASTM D 1218	1,4830	
Density at 25°C	EN ISO 12 185	949	kg/m <sup>3</sup>
Odor		Specific	
Flash point in closed container	ISO 2719	50	°C
Auto-ignition temperature	ASTM E 659	>200	°C
Freezing point	ASTM D 97	-30	°C
Balance after evaporation	ASTM D 1209	<3	%
Evaporation rate relative (ether = 1)	DIN 53 170	700	
Benzene and heavy metal content	ASTM D 4367	0	% (m/m)
Content of chlorine, sulfur, CFCs and HCFCs, Bromopropane and chlorinated thinners, Glycoether (toxic for reproduction)		0	% (m/m)
Surface tension at 20 ° C	ISO 6295	30,8	Dynes/cm
Viscosity at 25 ° C	ASTM D 445	2,6	mm <sup>2</sup> /s
Evaporation rate	NF T 30 301	6 hours	

**PACKAGING:** 5, 20 liters

### Instructions for use:

**IMPASOL® SOLVENT S95 GEL** is a clean remover suitable for all types of materials. We clean the components by rinsing or dipping. We can also apply **IMPASOL® SOLVENT S95 GEL** and then (after softening and peeling off the layer) rinse with pressurized water to quickly remove coarse dirt (paints, varnishes, coatings), thus also reducing the consumption of **IMPASOL® SOLVENT S95 GEL**. The removal time depends on the strength (thickness) and degree of curing (polymerization), the removal temperature and the possible use of ultrasound. **IMPASOL® SOLVENT S95 GEL** is able to clean weak coatings (5-500µm) in approximately 1 to 5 minutes. In the case of removing more layers of paint, this time can be even longer (1 hour or more depending on the layers of coating).

**HF SERVIS s.r.o.**, Plešnice 25, 330 33 Město Touškov Czech republic  
Tel. : 377 279 255, E-mail: [technik@hfservis.cz](mailto:technik@hfservis.cz), [www.impasol.com](http://www.impasol.com)